



(*) In order to avoid oxidizing / darkening, additional clear coat layer is recommended. The application parameters such as curing temperature / time and film thickness, can affect the a coating appearance. Some slight variations may occur. This catalogue is not contractually binding.

(**) Oksitlenme ve kararmaya karşı direnç için üzerine vernik tabakası eklenmesi tavsiye edilir. Uygulanan kurlenme sıcaklıkları, zaman ve film kalınlığına bağlı olarak yüzey farklılıkları oluşabilir. Ufak miktarda sapmalar meydana gelebilir. Bu katalogun hukuki olarak bir bağlayıcılığı yoktur.



09638.MC017



09618.MC835



09688.M260M



09688.M1035



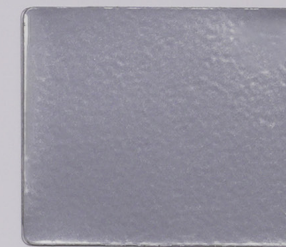
08630.M9007



09688.M810M

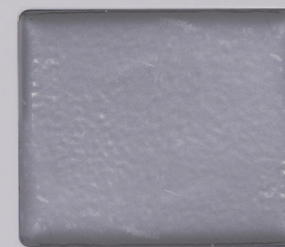


09688.M9006



03690.MGV66 (*)

03798.PWH32



03690.MGW64 (*)

03798.PWH32



09638.M5540



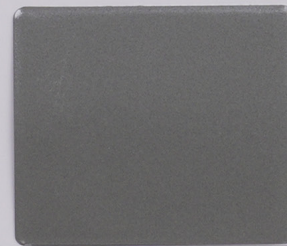
08638.M5516



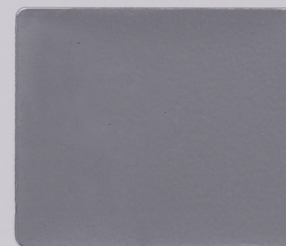
09688.M1036



08698.M7048



09698.09007



02690.00772 (*)

INDOOR



09630.09006



02698.MGK47 (*)

INDOOR

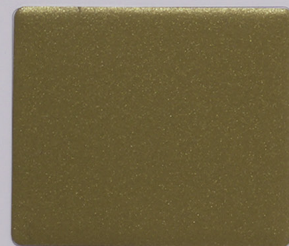


02618.0GA88 (*)

INDOOR



08638.M7048



08638.M5761



02690.00121 (*)

INDOOR



09630.09007



09698.09006



08628.M9006



09638.MGV08



02698.MGK90 (*)

INDOOR



02690.09006 (*)

INDOOR



ENVIRONMENTALLY FRIENDLY
PULVERIZED SOLUTIONS

PulverMetallic
RAL & SPECIAL INSTOCK COLORS



pulver